



# PARAGON ENVIRONMENTAL

## ASBESTOS GUIDE



### CHOOSING YOUR ASBESTOS CONTRACTOR

**Paragon Environmental is an experienced asbestos abatement company located in the Denver area. We are a professional company, founded by an environmental engineer. We are conscientious of our role in abatement and concerned for the safety of our customers. In the case of asbestos, timely remediation is important. We recognize the urgency of our customers and help them quickly return to homes and/or offices.**

**Why would asbestos be present?** Asbestos can be discovered when a home or business has experienced a disaster, such as a fire, flood or other water damage event. It can also be discovered during renovation or remodeling projects. It is often found in the insulation or building materials that were used at the time a particular structure was built. Testing for asbestos should be planned whenever there is a plan to replace ceilings, flooring, drywall, heating or plumbing systems.

**Experience that counts.** Owned and operated by a degreed environmental engineer, Paragon Environmental understands and appreciates OSHA, EPA and CDPHE guidelines involving asbestos removal. Your concern is our concern. Paragon understands the risk to family and personal health. We'll make sure your project is treated carefully and with the utmost expertise.

**Accurate and up-front estimates.** While some companies may include additional costs on the final invoice, Paragon Environmental stands by its initial estimate.

**Why call Paragon.** When asbestos is found in homes or businesses, work stops. Asbestos abatement takes priority, and it must be done correctly. But it can be done with minimal interruption if a professional abatement company is involved. We know you have questions. We are happy to answer them for you. Give us a call at 303-529-1257.

**PARAGON ENVIRONMENTAL**

**5000 Robb St. Bldg 1C Wheat Ridge, CO 80033**

**Phone: 303-529-1257; Website: [www.paragonenv.com](http://www.paragonenv.com)**

**Email: [admin@paragonenv.com](mailto:admin@paragonenv.com)**



## WHEN ASBESTOS IS DISCOVERED



**If asbestos is suspected, Paragon Environmental will have that area tested before removing any materials. Demolition proceeds only after all materials are tested. This is the standard required by law in the state of Colorado. Colorado Regulation 8 is explained more thoroughly on the following page. [Here is the link to the Colorado law.](#)**

**If a structure contains asbestos, we advise the following:**

1. Don't panic. The presence of asbestos is fairly common.
2. We will provide an estimate to remove the materials containing asbestos.
3. If you are working through an insurance company, we will work with you to get the estimate approved before moving forward with abatement.
4. If the abatement is to proceed in a critical common area of the building, such as a kitchen, owners may want to ask for insurance to help in seeking accommodations during the abatement process.
5. Paragon Environmental will seal the affected area. Our number one priority is to prevent the spread of any asbestos contamination.
6. Once contained, the affected area is carefully removed following strict guidelines set forth by OSHA, EPA and CDPHE. Our technicians wear protective equipment and respirators.
7. Lastly, the area is thoroughly cleaned to ensure that all traces of asbestos is removed. Paragon Environmental uses special HEPA filtered vacuums and cleaners to meticulously eliminate any asbestos fibers.

**For further information, the Colorado Department of Health and Environment website includes a [valuable asbestos guide.](#)**



# HISTORY OF ASBESTOS AND HOW IT IS BEING USED TODAY



## History.

The first asbestos mine operation was started in 1894. It was after World Wars I and II that asbestos use grew rapidly – mainly in the building of homes, commercial buildings and in consumer products. By this time there were as many as 60 asbestos mines in the eastern U.S. alone. The largest operations were in AZ, NC, VT and CA.

## Asbestos and Health Concerns.

In the late 1800s and early 1900s, medical experts began to warn of the effects of asbestos on workers. Respirators were recommended for those working around asbestos.

## EPA Bans.

By the 1970s and 1980s, the EPA began banning asbestos in insulation, decorative surfacing material, various paper products and flooring felt. In 1989 the EPA banned almost all asbestos-containing materials, but the ruling was overturned in 1991. The result was that products were allowed to legally contain asbestos.

## How Asbestos Is Used Today.

While asbestos has not been mined in the U.S since 2002, we still import around **1,000 metric tons for consumption every year**, most of which comes from Brazil.

## Products that can still contain asbestos.

There are many, including cement products, clothing, pipeline wrap, roofing felt, vinyl-asbestos floor tile, millboard, roof and non-roof coatings. Automobile components can also contain asbestos, including transmission components, clutch facings, disc brake pads, drum brake linking, brake blocks and gaskets.

The chloralkali industry accounts for about 67% of asbestos consumption in the U.S, roofing products about 30% and other unknown applications about 3%.

**PARAGON ENVIRONMENTAL**

5000 Robb St. Bldg 1C Wheat Ridge, CO 80033

Phone: 303-529-1257; Website: [www.paragonenv.com](http://www.paragonenv.com)

Email: [admin@paragonenv.com](mailto:admin@paragonenv.com)





## COLORADO REGULATION 8

If asbestos is suspected, Paragon Environmental will have that area tested before removing any materials. Demolition proceeds only after all materials are tested. This is the standard required by law in the state of Colorado.

You can view complete information about [Colorado Regulation 8](#). Here's a summary of some of the critical information.

- 1. Are you remodeling, renovating or demolishing?** You must have your project inspected for ACM (asbestos-containing materials).
- 2. Is it dangerous and illegal to improperly disturb ACM?** Asbestos can be found in many common building materials. A certified asbestos building inspector can determine which materials contain asbestos and which are regulated.
- 3. What is the general rule regarding asbestos testing for renovation projects?** In summary, no matter the age of the home or business undergoing renovation, it must be tested for asbestos. The ONLY exception, which by the way is extremely rare, is when the "building was built after October 12, 1988 AND the architect or engineer who built it signs and submits documentation showing that no asbestos materials were specified or used in the construction of the building." Please select the links above to learn more about the law.
- 4. What is the general rule regarding asbestos testing for demolition projects?** In summary, "the building or area of the building to be demolished *must be inspected for asbestos* by a Colorado-certified asbestos inspector."

More information from the Colorado Department of Public Health & Environment can be found at: <https://cdphe.colorado.gov/indoor-air-quality/asbestos-general-information>.

PARAGON ENVIRONMENTAL

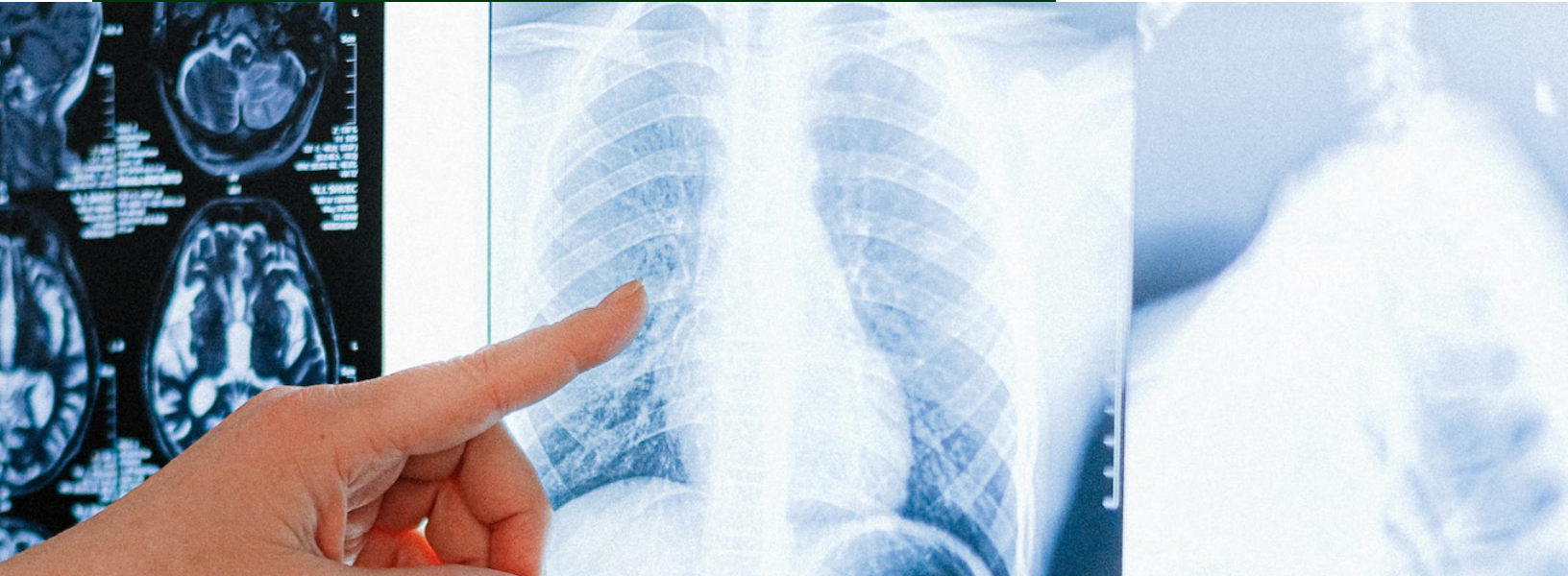
5000 Robb St. Bldg 1C Wheat Ridge, CO 80033

Phone: 303-529-1257; Website: [www.paragonenv.com](http://www.paragonenv.com)

Email: [admin@paragonenv.com](mailto:admin@paragonenv.com)



## ASBESTOS AND HEALTH CONCERNS



**Exposure.** Most exposure comes from inhaling airborne asbestos fibers. This can occur during the mining process, when making or installing asbestos-containing products, when renovating or remodeling, or when an asbestos-containing product deteriorates and releases tiny fibers into the air.

When tiny asbestos fibers are disturbed and become airborne, they can easily be inhaled. Once inside the lungs, they become trapped and, over time, cause inflammation, scarring, and even genetic damage (cellular mutation). The fibers can also damage the lining of the stomach and intestinal tract if they are ingested. While diseases tend to develop from heavy exposure over an extended period, no amount of asbestos exposure is considered safe.

**Asbestosis.** Asbestosis causes scarring of the lungs which in turn reduces the ability of a person to inhale and exhale properly, making it quite difficult to breathe. Asbestosis may take many years to show up – the time between exposure and symptoms may be between 15 to 30 years.

### **What cancers are associated with asbestos exposure?**

The two most common forms of cancer linked to asbestos exposure are mesothelioma and lung cancer. Other cancers have been associated with asbestos, too, such as laryngeal cancer and ovarian cancer. Further, some studies suggest a correlation between asbestos exposure and breast or colon cancer.



## WORKING WITH INSURANCE



The Q&A below will help you understand your rights as a consumer.

### Must I use the asbestos abatement company recommended by my insurance company?

No. You have a choice. We highly recommend you talk with several asbestos abatement companies and listen to how they will solve your problem.

### What should I look for in an asbestos abatement company?

Here are a few items to explore:

- **Professional work experience.** Are technicians trained and certified?
- **Dependability.** Check ratings on Google and other sites to determine promptness, quality assurance and service record.
- **Is the business locally owned?** You may want a company with community relationships.
- **Technological expertise?** Innovation in the asbestos abatement industry has created a gap in knowledge for some companies. Be sure any company you talk to follows the strict guidelines set forth by OSHA, EPA and CDPHE.

### What questions should I be asking my claims representative?

- Is my claim covered?
- Are there any exclusions in my policy that might affect this claim?
- What if the abatement costs exceed the limits on my policy?
- Will the insurance company cover all costs associated with asbestos?
- How are the expenses of the asbestos abatement project handled?
- Who is authorized to settle my claim?

### How long will the asbestos abatement process take?

Asbestos abatement costs will vary depending on the amount of asbestos and where the asbestos is found.

